

Coastal Actions for Resilience and Economic Security (CARES) of Southeastern Wisconsin Bluff, Beach, and Infrastructure Assets

Wisconsin Coastal Beaches Working Group Annual Meeting
Green Bay, WI

Todd Breiby
Wisconsin Coastal Management Program



NOAA's Coastal Resilience Grants Program

Support collaborative approaches to help coastal communities prepare for and recover from the impacts of extreme weather, climate hazards, and changing ocean and Great Lakes conditions

2015/2016: \$9 million awarded to 12 RCRG projects

2017: \$13 million awarded to 19 CRG projects



OFFICE FOR COASTAL MANAGEMENT
NATIONAL OCEANIC AND ATMOSPHERIC ADMINISTRATION

Coastal Resilience

The ability to respond to, withstand, and adapt to the impacts of hazardous events such as coastal storms, erosion, and water level extremes

Bluffs



Beaches



Infrastructure



Resilience Project Themes

Enhance community capacity to prepare and plan for coastal hazards in Southeastern Wisconsin

Organize a Community of Practice on Coastal Hazards

Evaluate and Map Shoreline Recession

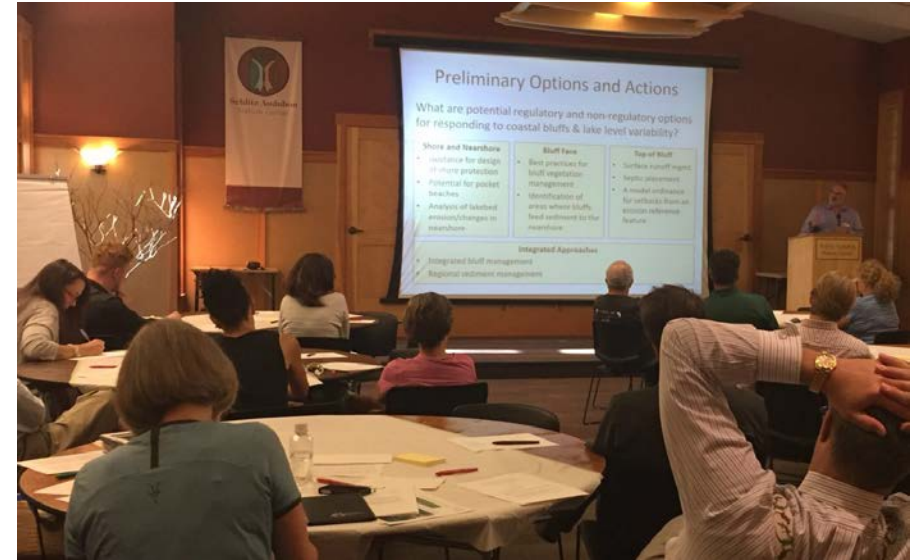
Create Guidance on Risk-Reduction Practices

Identify and Implement Local Resilience Opportunities

Community of Practice

Semi-annual meetings to discuss, share, and learn about coastal hazards, including

- Forums on local issues
- Workshops on resilience practices
- Demonstrate decision-support tools
- Invited speakers on desired topics
- Structured discussion on project ideas and collaboration



Erosion & Storm Resilient Beach Practices



Importance of beaches/current efforts

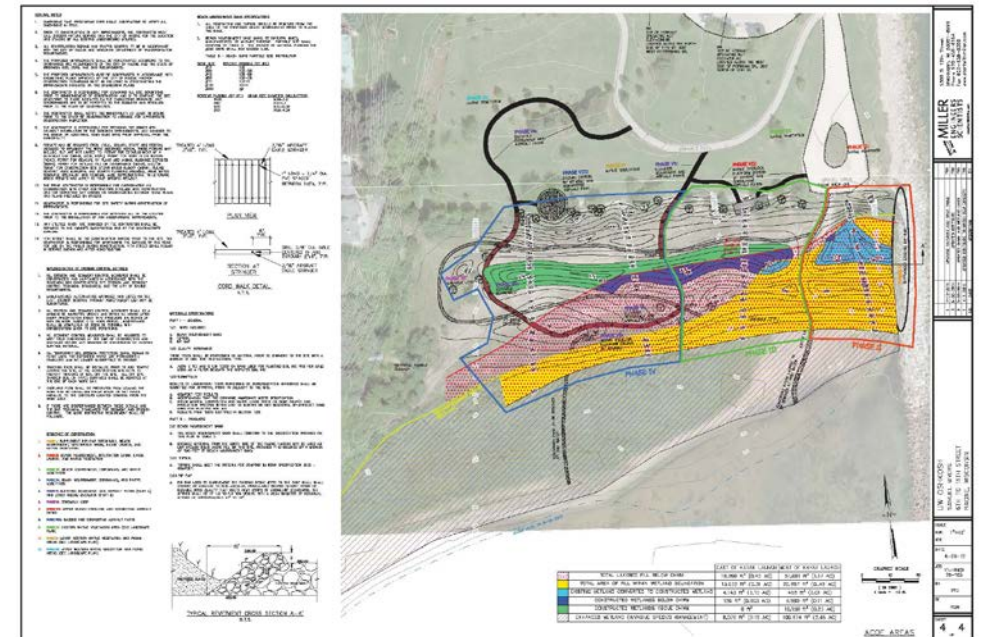
High energy environment, coastal storms, water level impacts

Influence planning, restoration, maintenance

Technical guidance

Training (state, tribal & local govt., consultants)

Wisconsin Coastal Beaches Working Group and Great Lakes Beach Association



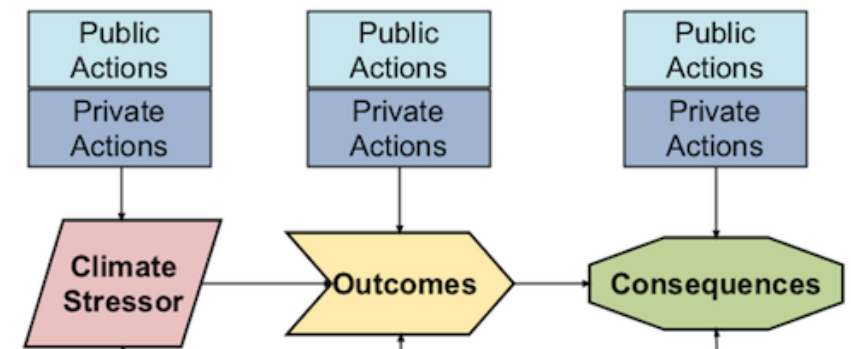
Project Activity Overview

Organize a Community of Practice

Evaluate and Map Shoreline
Recession

Create Guidance on Risk-Reduction
Practices

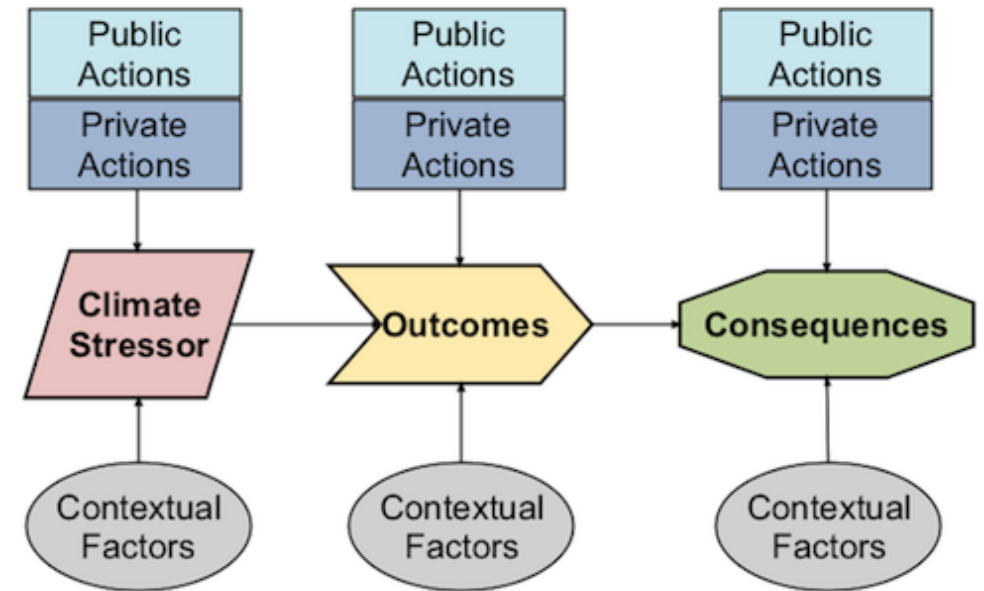
Identify and Implement Local
Resilience Opportunities



Vulnerability, Consequences, & Adaptation Planning Scenarios (VCAPS)

Facilitated workshops to identify and prioritize actions to reduce, adapt and manage consequences

- Forums on local issues
- Workshops on resilience practices
- Demonstrate decision-support tools
- Invited speakers on desired topics
- Structured discussion on project ideas and collaboration



Local Resilience Planning Projects

Years 2-3

Total of \$250,000 available to fund local resilience projects

Planning Projects, for example

- Assess existing risk-reduction practices
- Plan improved risk-reduction practices
- Evaluate and/or coordinate coastal hazards planning efforts

Not intended to fund construction

Cost Share Requirement

- 2:1 Federal to non-Federal match

Project Timeline

Year 1

Organize Community of Practice

Evaluate historic shoreline recession

Create bluff best management practices & vegetation guides

Identify vulnerabilities & opportunities with communities

Year 2

Facilitate Community of Practice

Assess shoreline recession scenarios

Create nature-based shoreline & harbor/marina guides

Begin local implementation projects

Year 3

Facilitate Community of Practice

Interactive recession rates & scenario maps

Create erosion- resilient beaches guide

Finish & evaluate local implementation projects