

WISCONSIN SEA GRANT

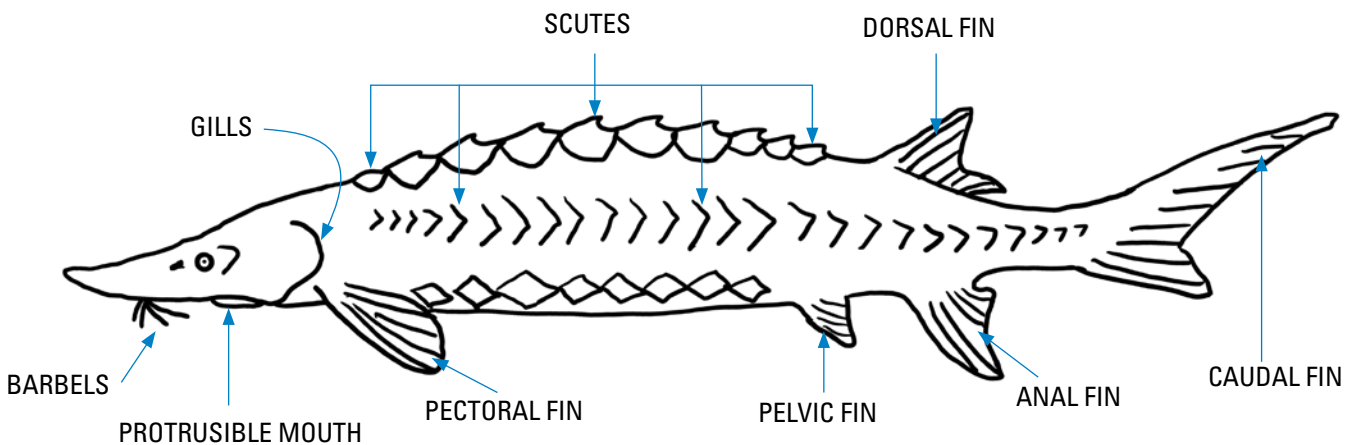
Explore Lake Sturgeon go.wisc.edu/5g4c4e

Answer these before you watch the video...		Answer this after you watch...
Something I already KNOW about Lake Sturgeon	Something I am CURIOUS about and want to know	The most interesting fact I LEARNED

FIELD NOTES

As you watch the video, jot down observations (what you notice) and new facts in the space below.

Label the different parts of a lake sturgeon



HELPFUL VOCABULARY

barbel: A whisker-like organ near the mouth or snout of a fish that is used to sense the presence of food or other objects.

benthic: Of, relating to, or occurring at the bottom of a body of water.

bottom feeder: A species that mainly feeds near the bottom of a lake or river in or near the sediment. The bottom of a lake or river is called the benthic zone.

ichthyologist: A scientist who studies fish.

pelvic girdle: A structure made of cartilage that connects the two pelvic fins.

scutes: Sharp bony structures on the outside of sturgeon that help protect them from predators when they are small. When sturgeon are older and larger and cannot be easily eaten by predators, the scutes remain but are no longer sharp.

vent: A combined opening where both digestive waste (poop) and reproductive materials (eggs or sperm) are expelled.

FIELD NOTES *continued*



True or False: Sturgeon are prehistoric; they have been around since the time of the dinosaurs.

True. Sturgeon have been relatively unchanged since before the dinosaurs, about 250 million years.

At what age does a female sturgeon reach maturity? A male? Males typically are mature at age 15 and females can take 20-25 years. They are slow growing and long-lived fish!

How does a lake sturgeon find food?

Lake sturgeon use barbels (whisker-like structures in front of their mouths) that are loaded with taste buds. When they feel or taste something they like, they will suck it up.

What does a lake sturgeon eat? Sturgeon mainly eat insects and other invertebrates, as well as small fish.

What is another name for a person that studies sturgeon? An ichthyologist is a person who studies fish.

True or false: Sturgeon have scales.

False. They have scutes to protect themselves.

CONTINUE TO EXPLORE

- What challenges do lake sturgeon face? Research and create a call to action poster.
- Lake sturgeon live in other parts of the world. Research it and make a global sturgeon map.
- Research the relationship between First Nations and sturgeon and create a piece of artwork that represents the connection between humans and sturgeon.
- When sturgeon begin spawning, sturgeon cams will begin livestreaming. (cityofshawano.com/412/Sturgeon-Cam and wolfrivercam.com) Watch and make observations. Draw the sturgeon in their habitat and describe what you notice about their behavior.