

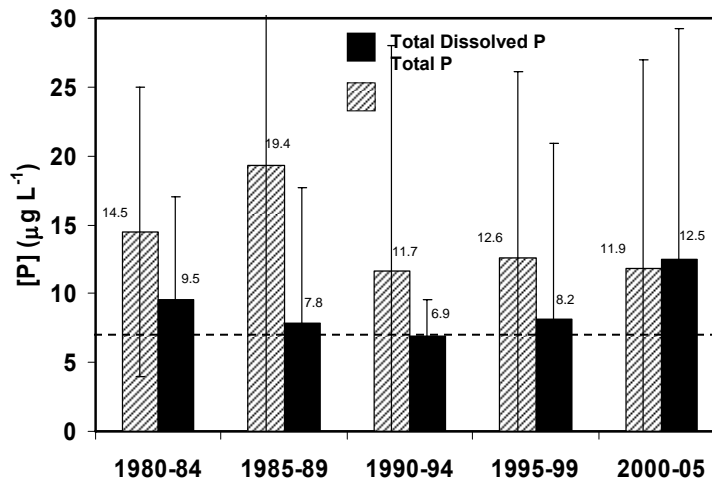


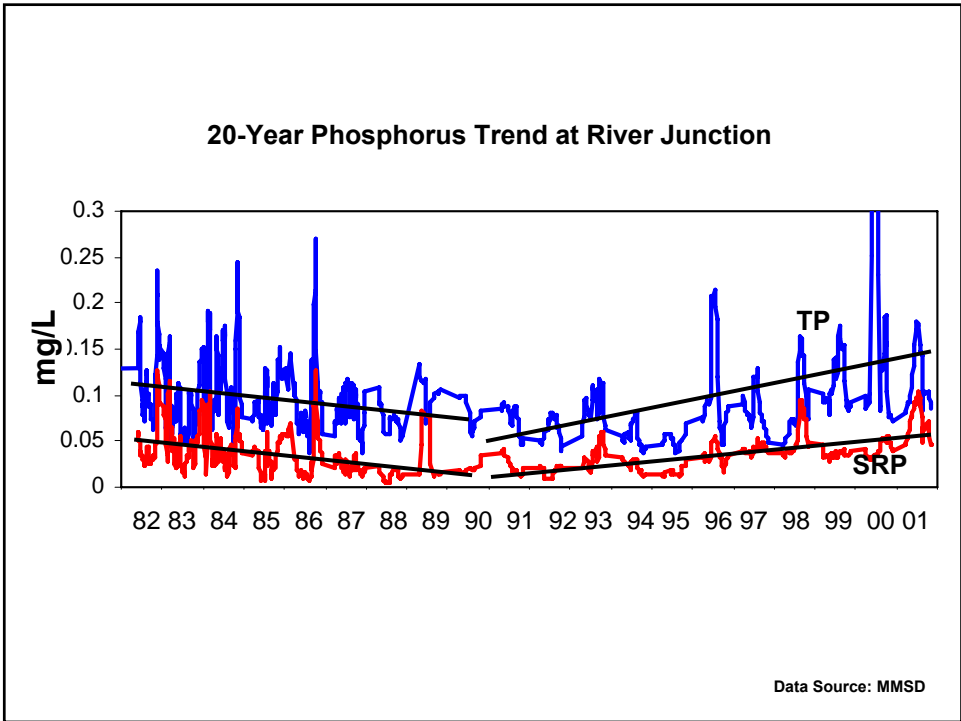
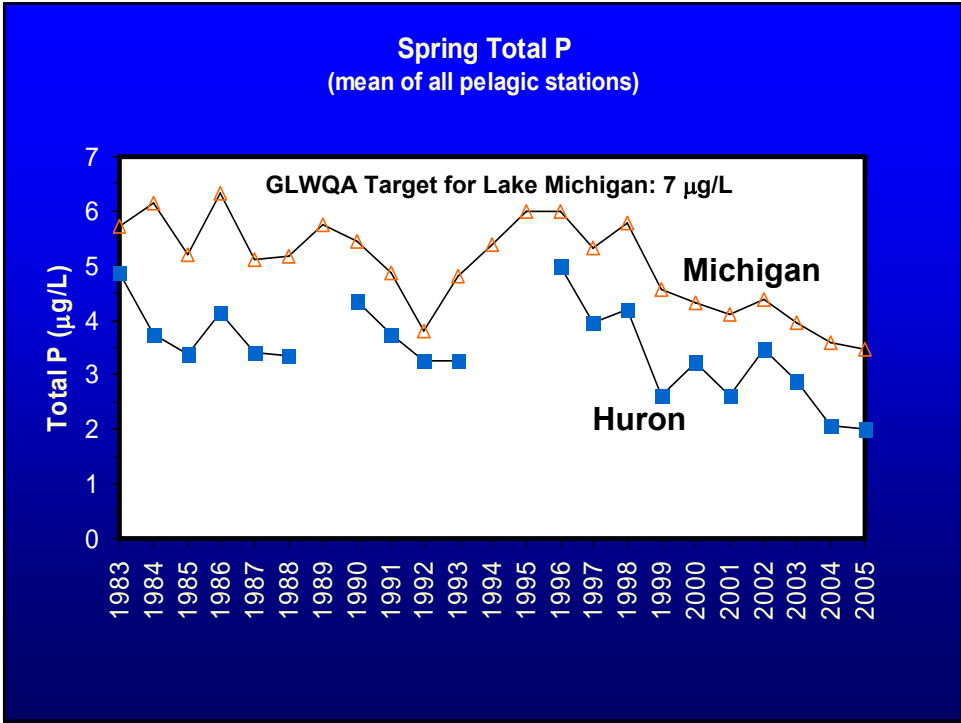
Update on Phosphorus and *Cladophora* in the Lake Michigan Nearshore Zone

Harvey Bootsma

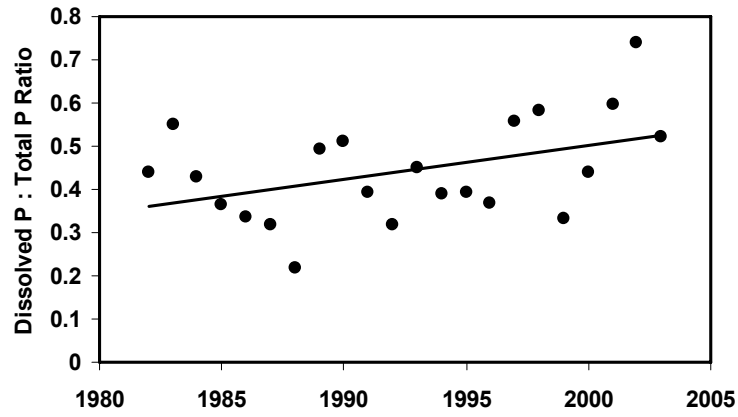


Nearshore TP and TDP Concentrations Since 1980, Near Milwaukee Harbor

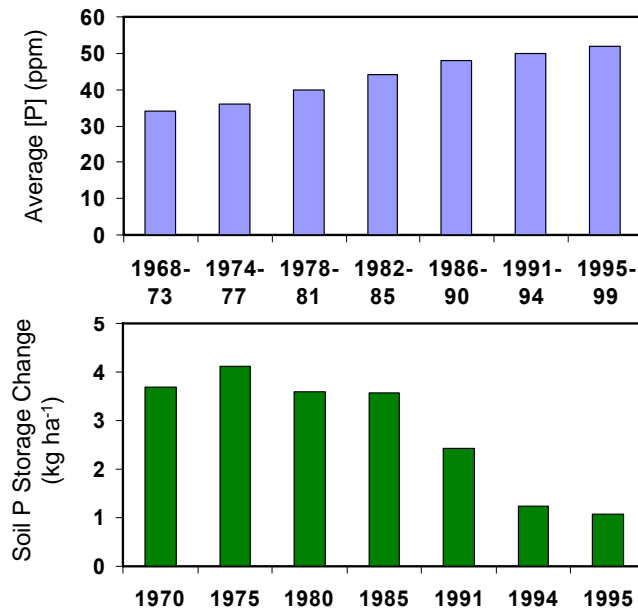




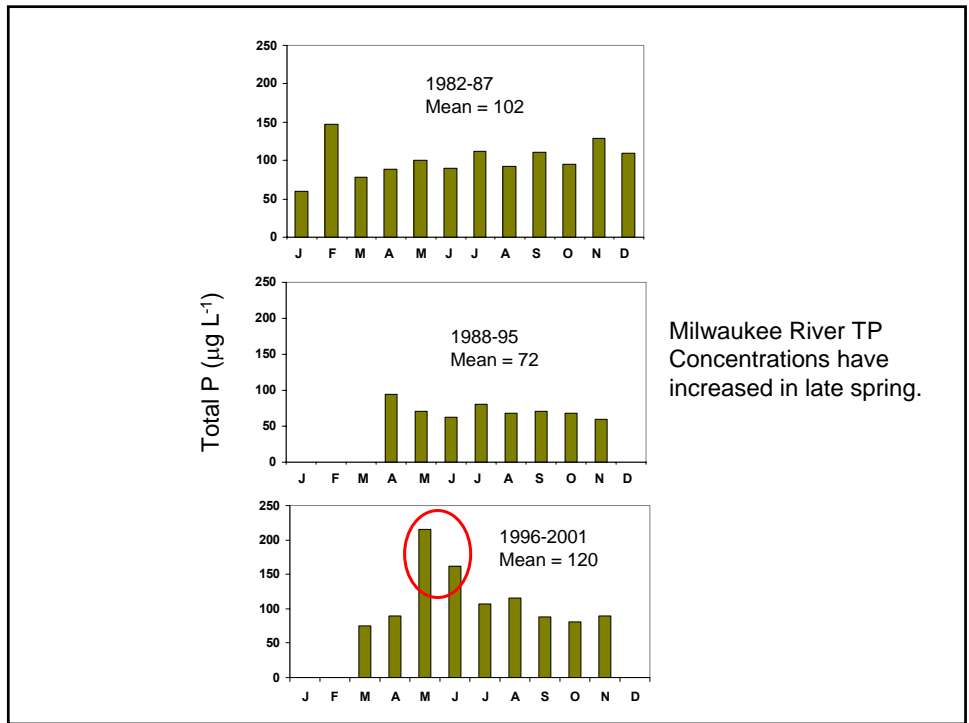
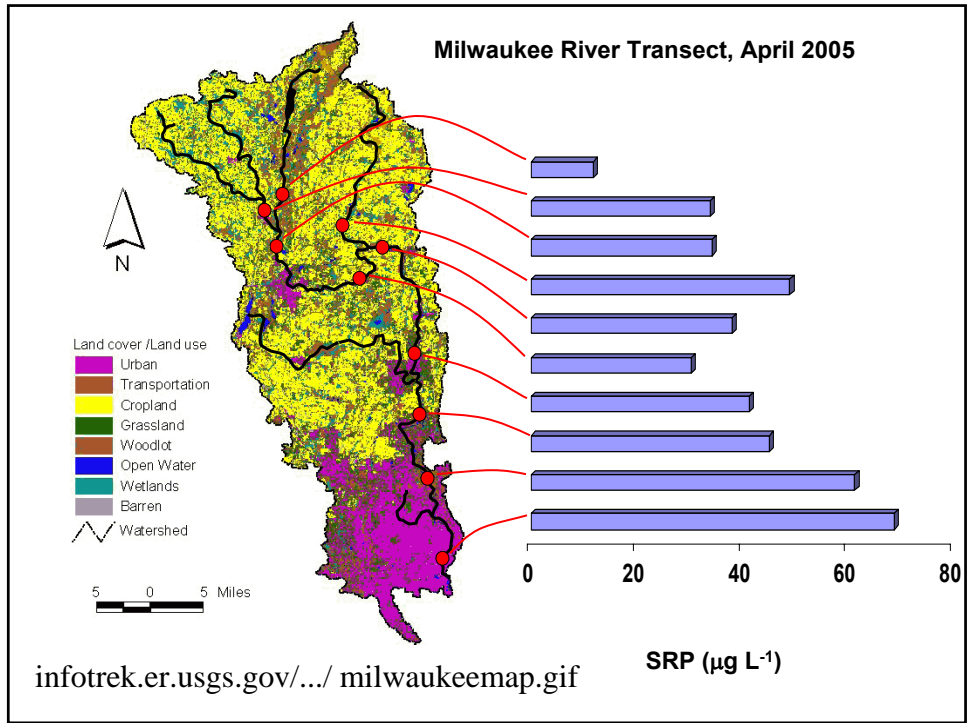
In Milwaukee River, dissolved P is becoming a larger fraction of TP

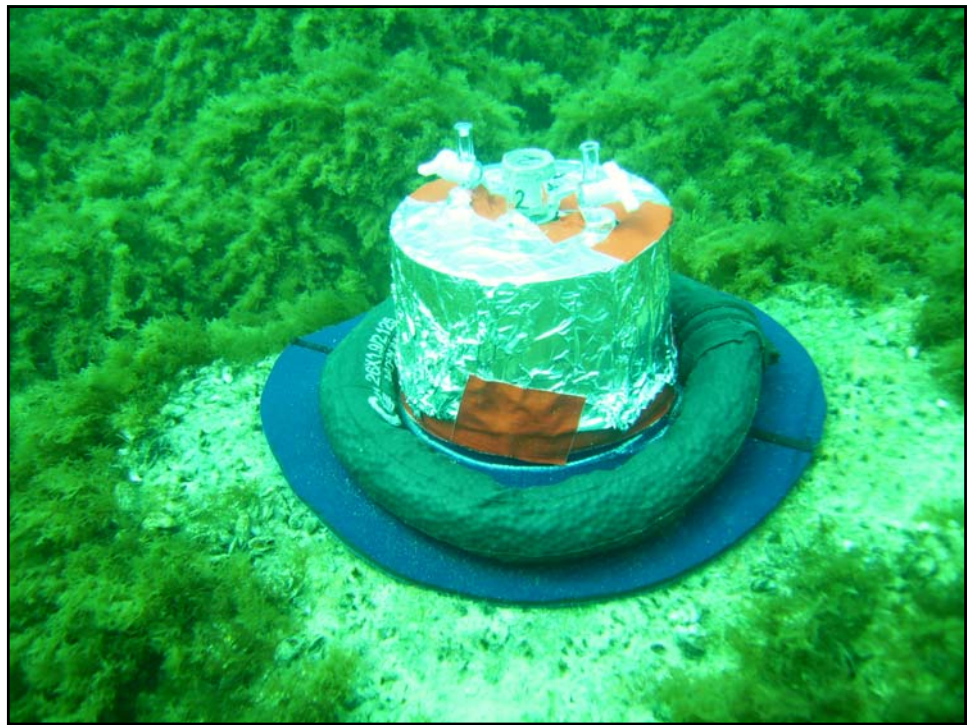
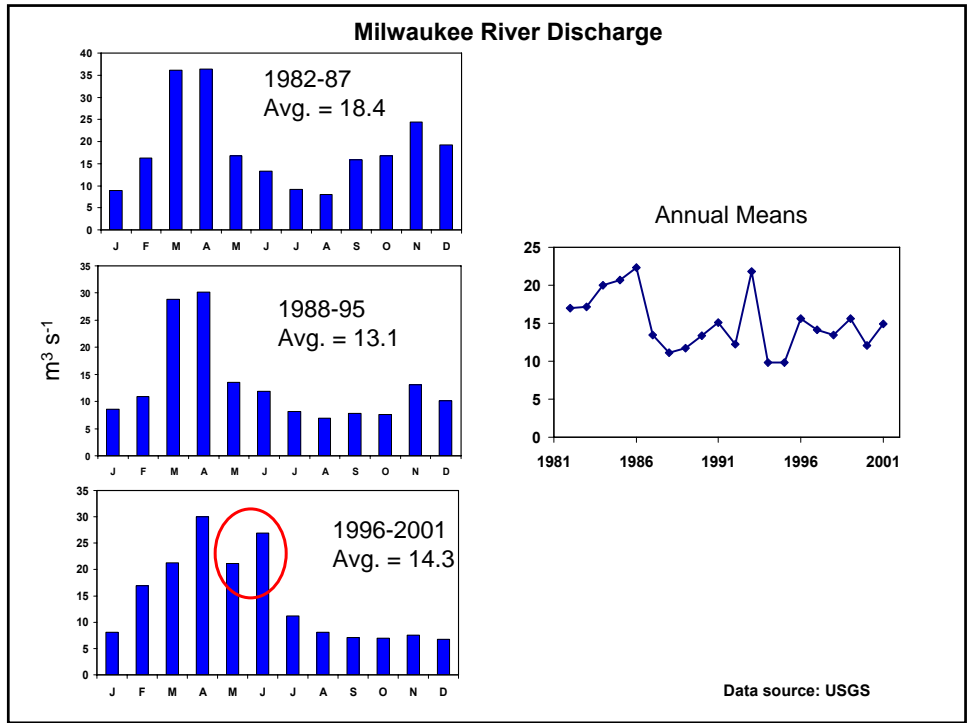


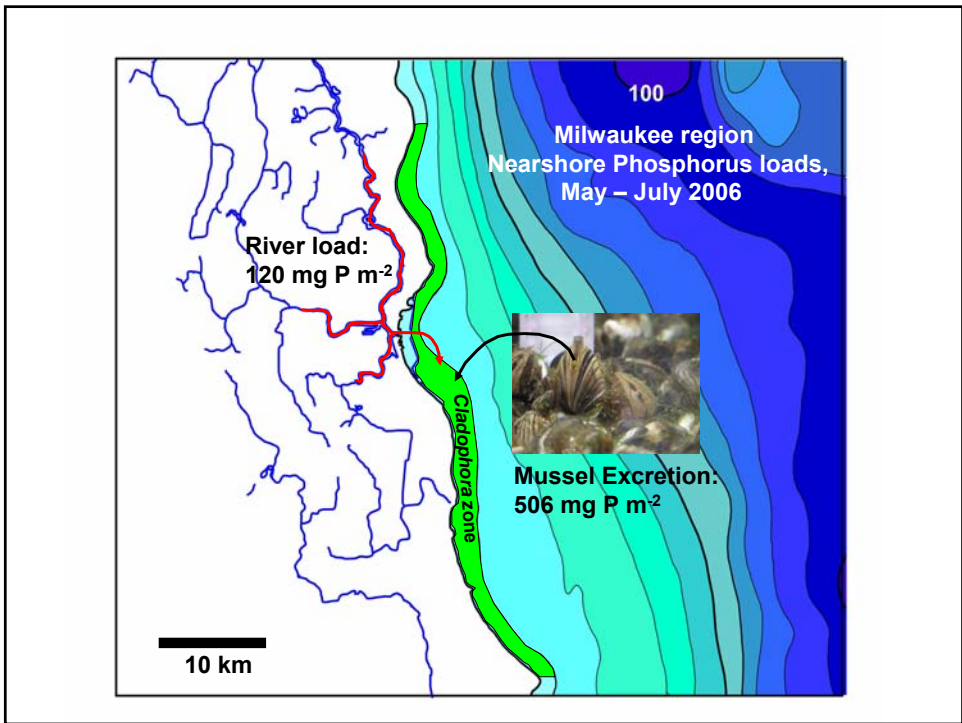
P in Wisconsin Cropland

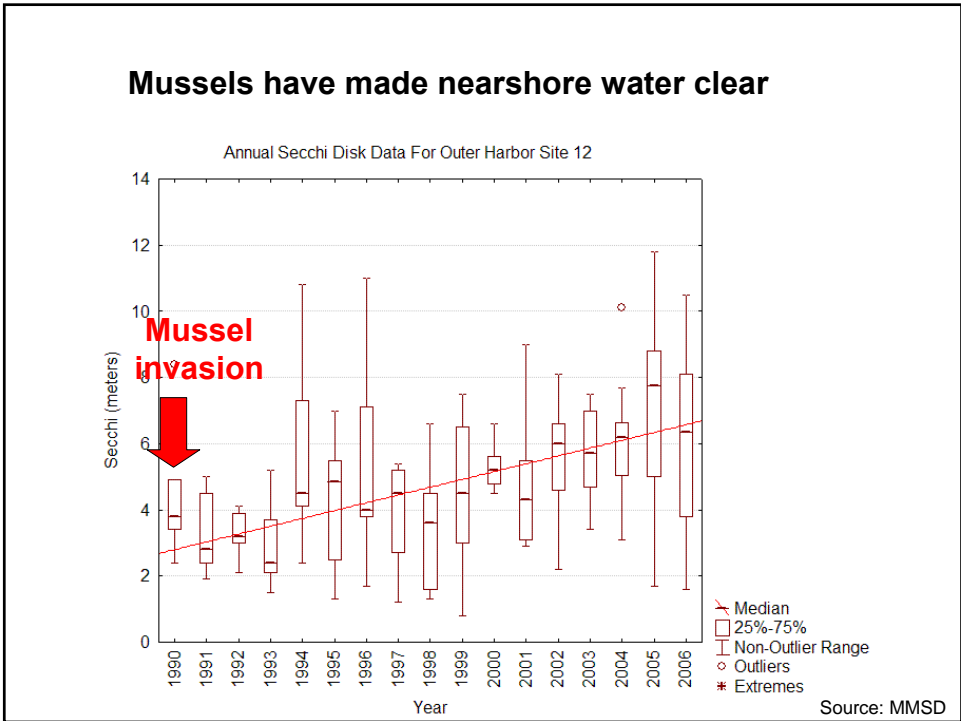
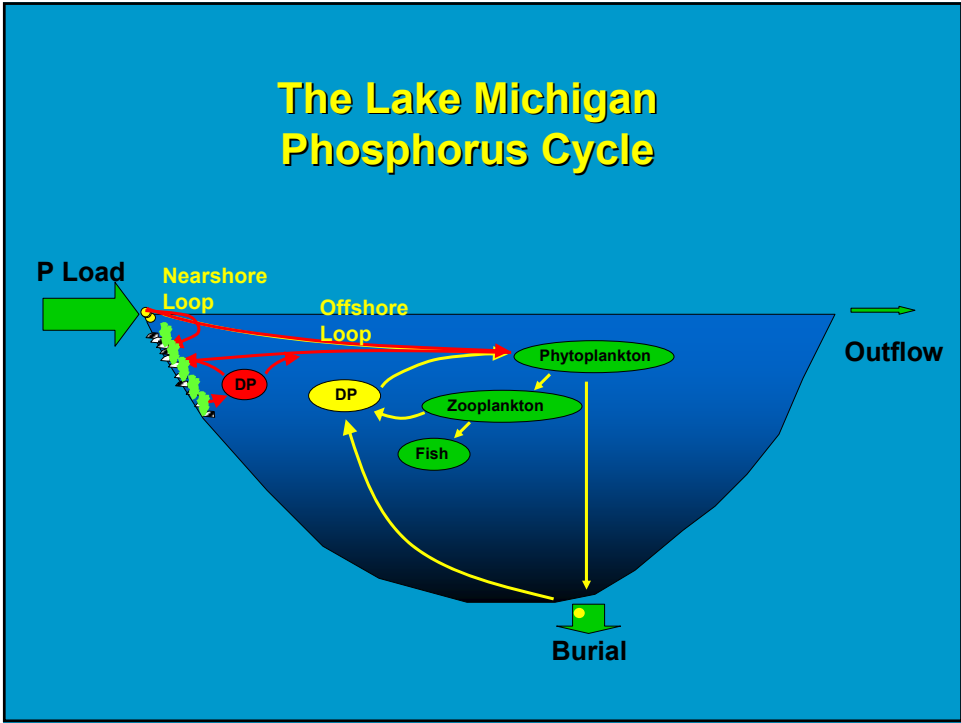


Bundy and Sturgul 2001







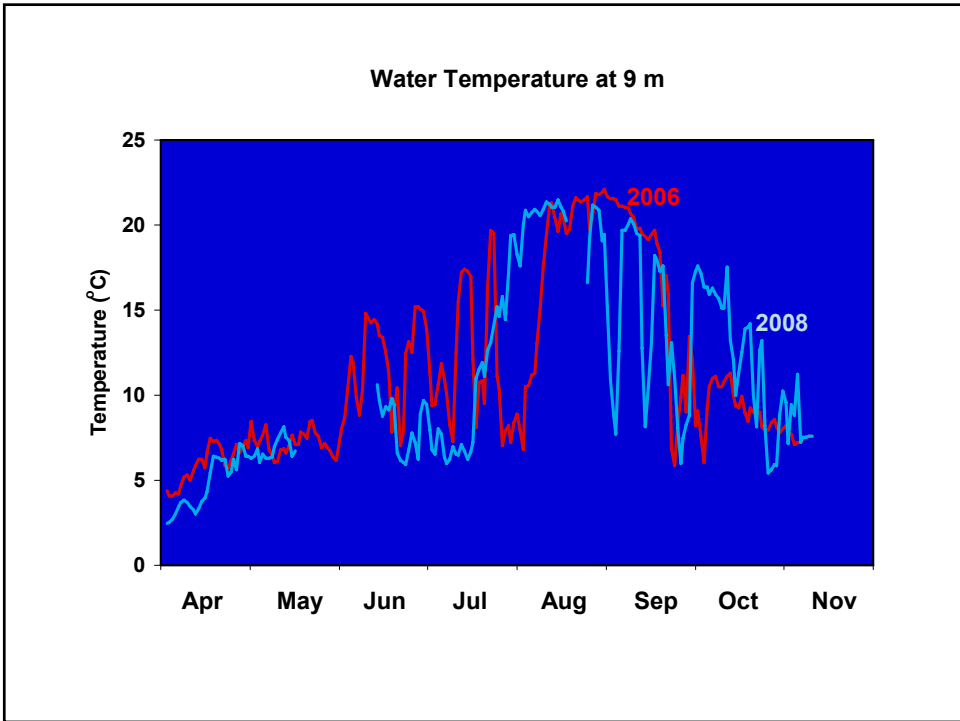
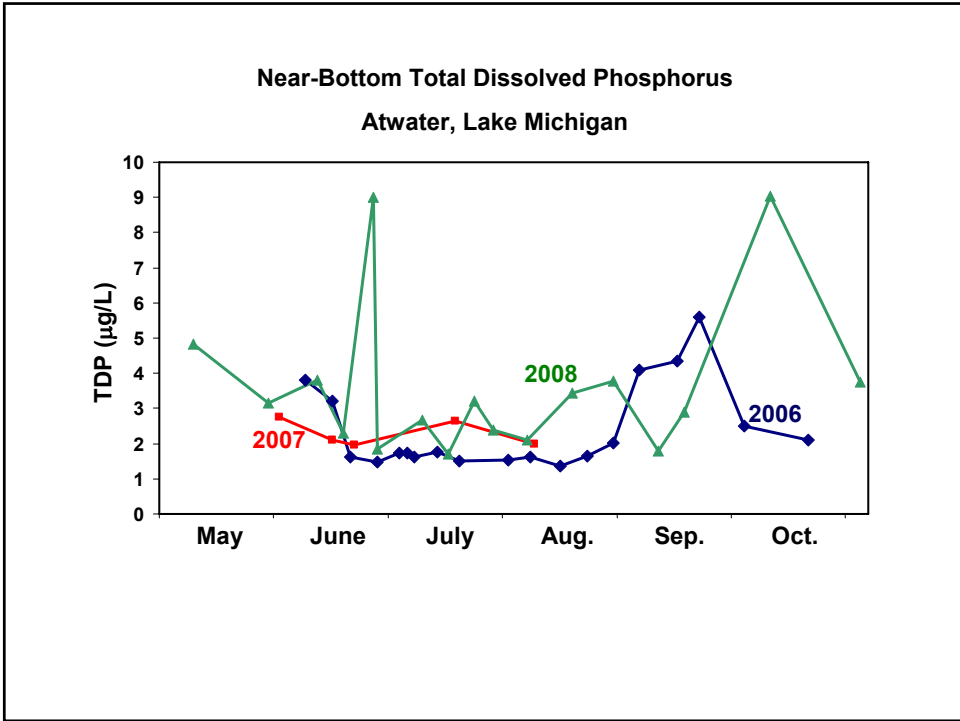


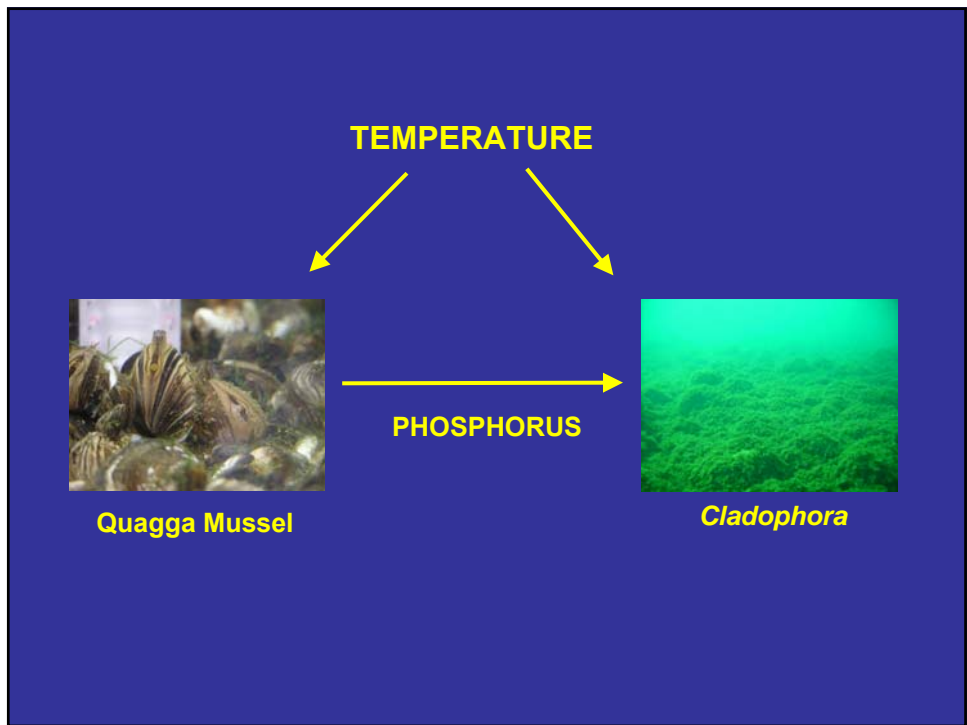
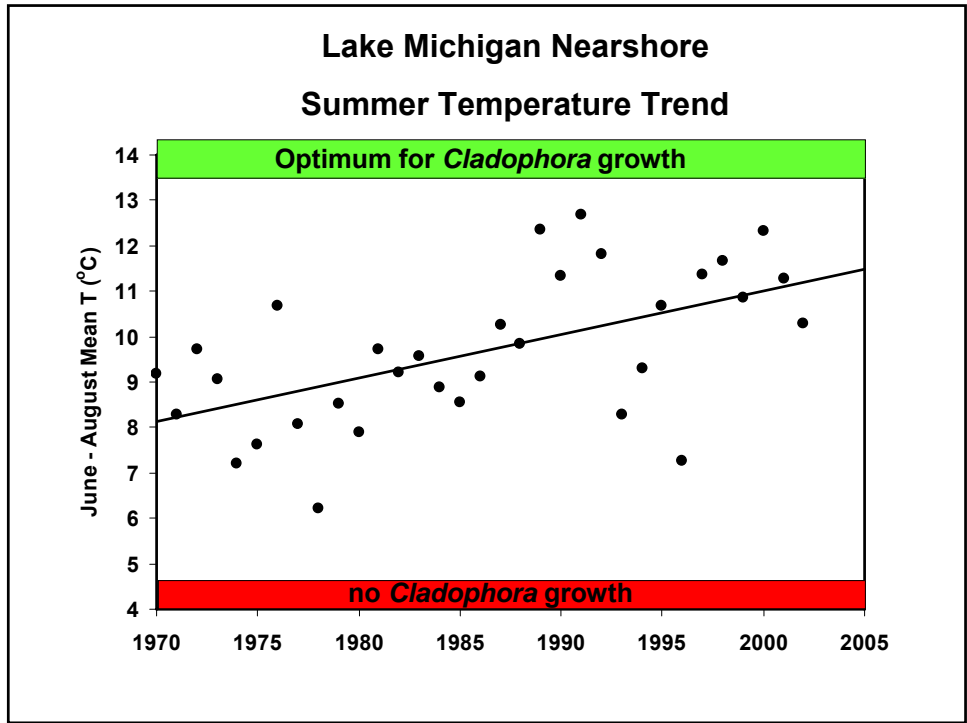
November 2007



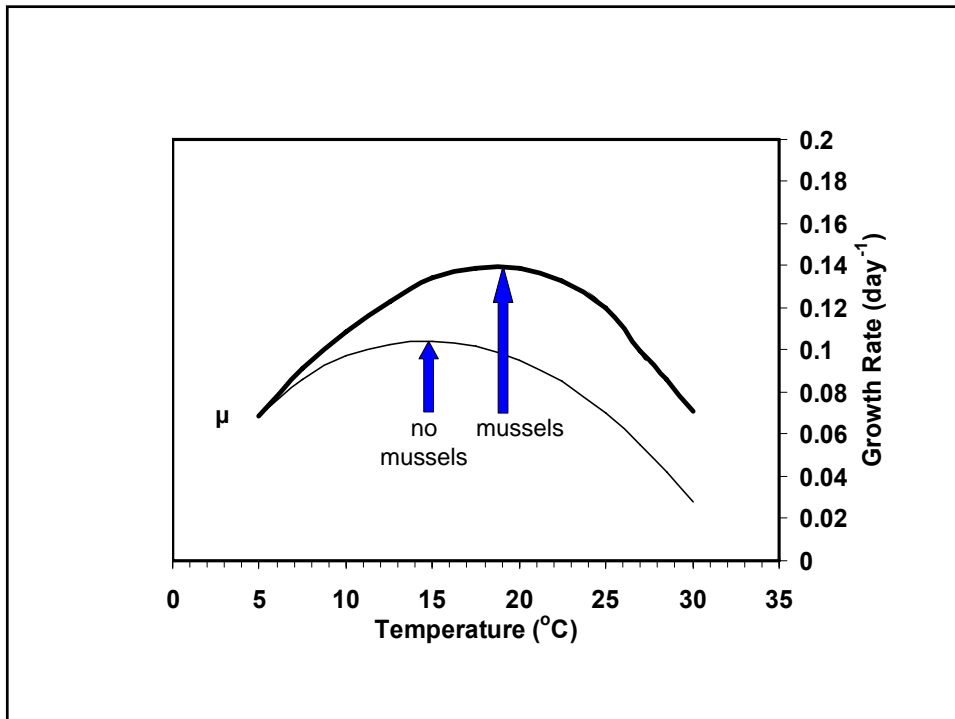
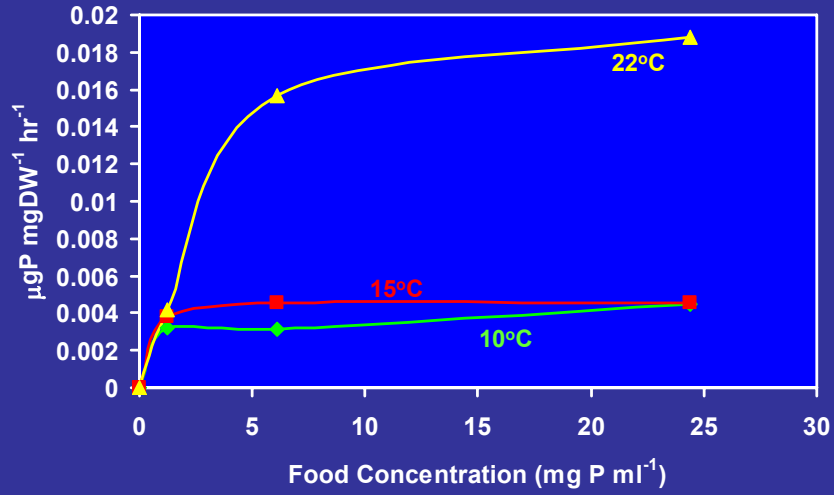
November 2008



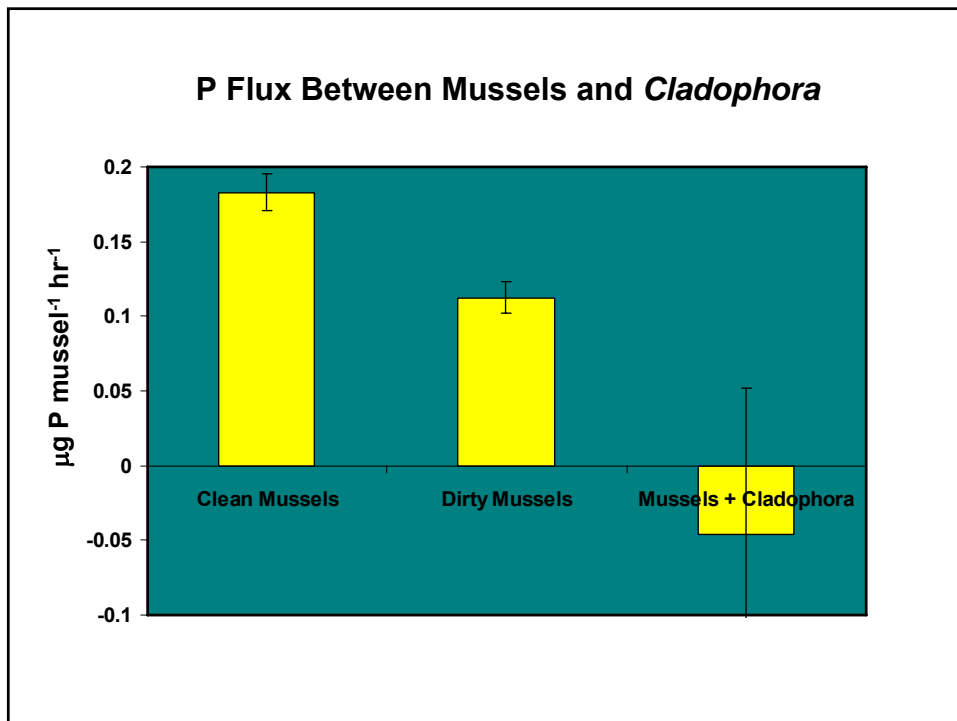




Lab Experiments:
Phosphorus Excretion by Quagga Mussels



LIGHT ?





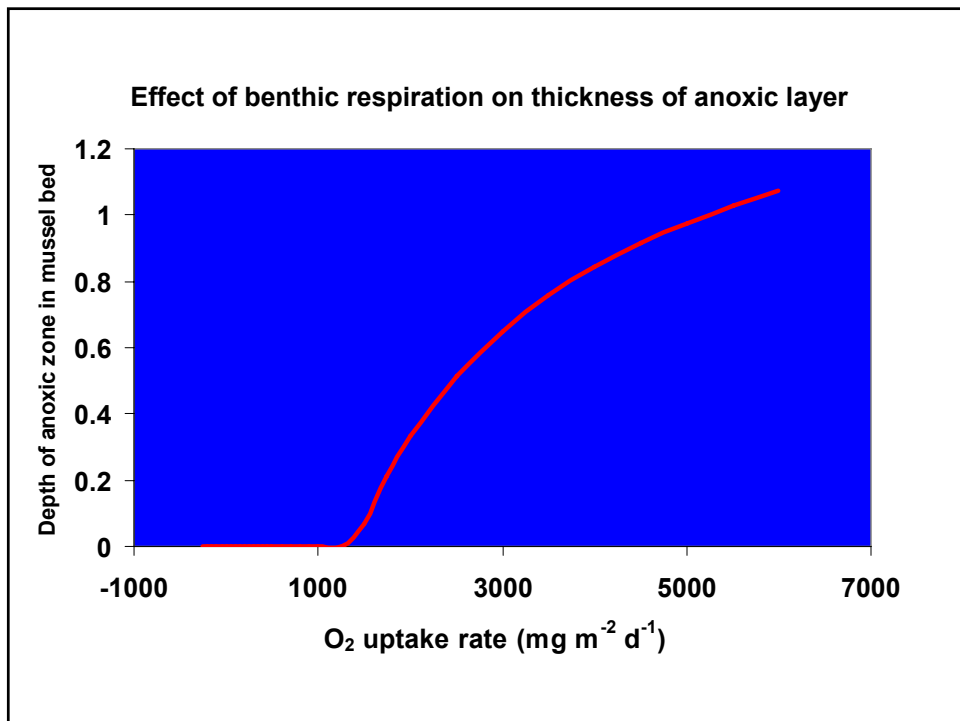
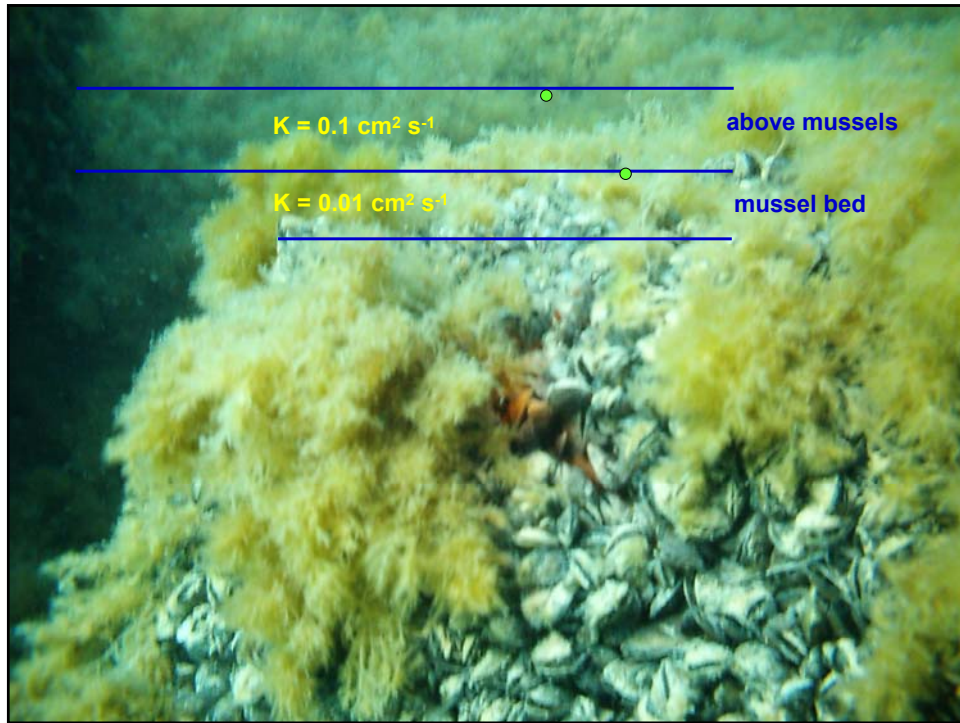
Current Needs

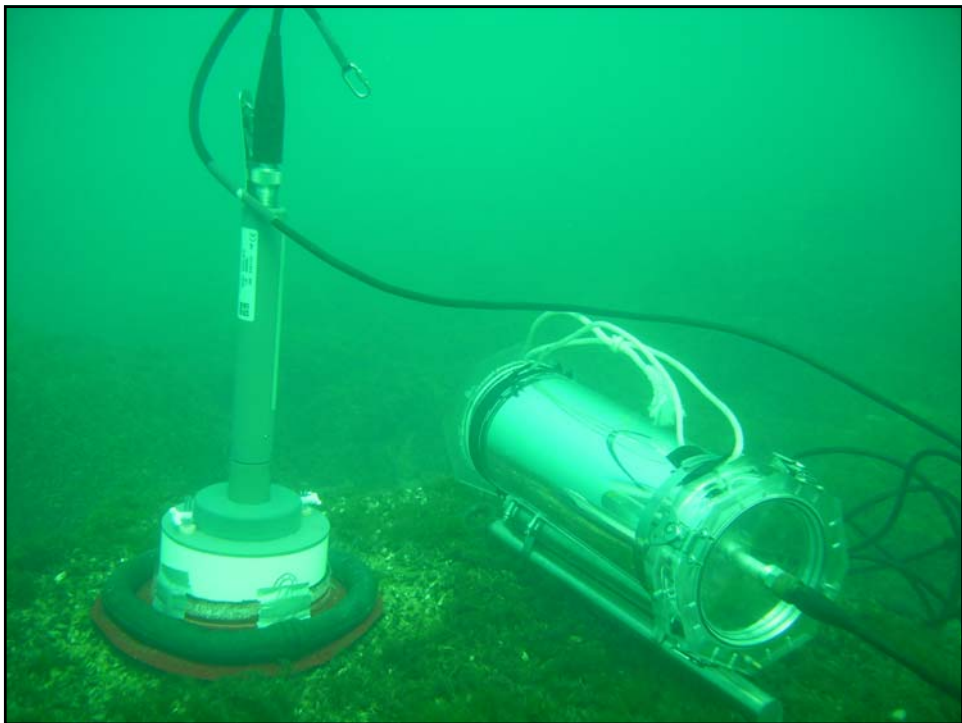
3. What is the botulism mechanism?



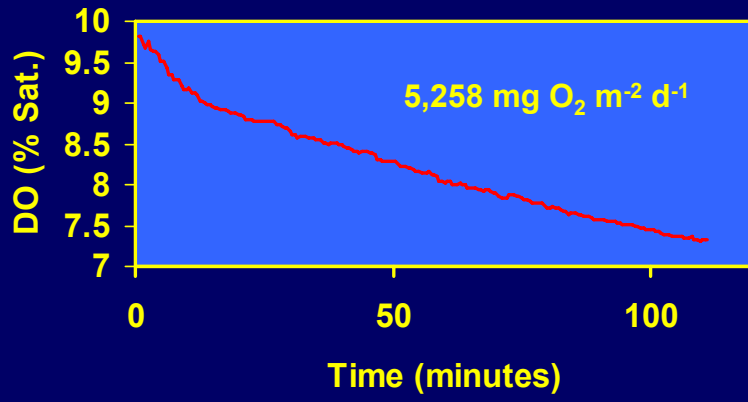
Photo: Alice Van Zoeren



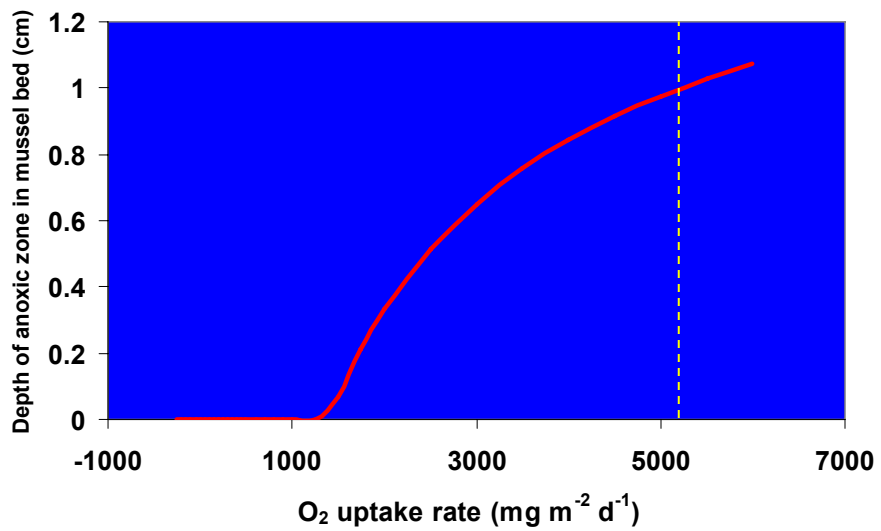


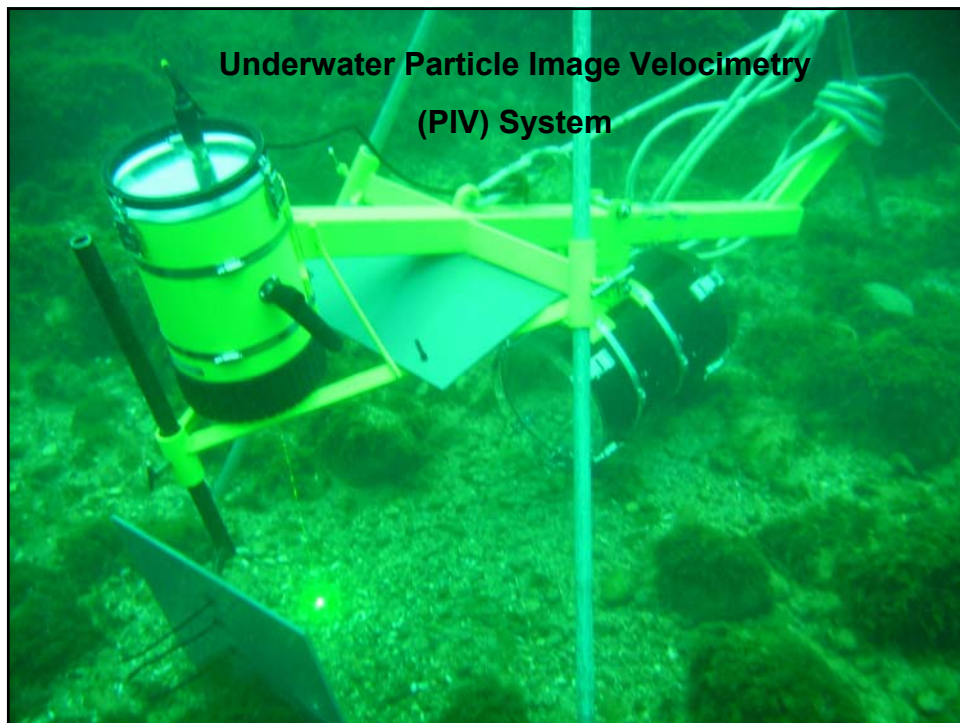
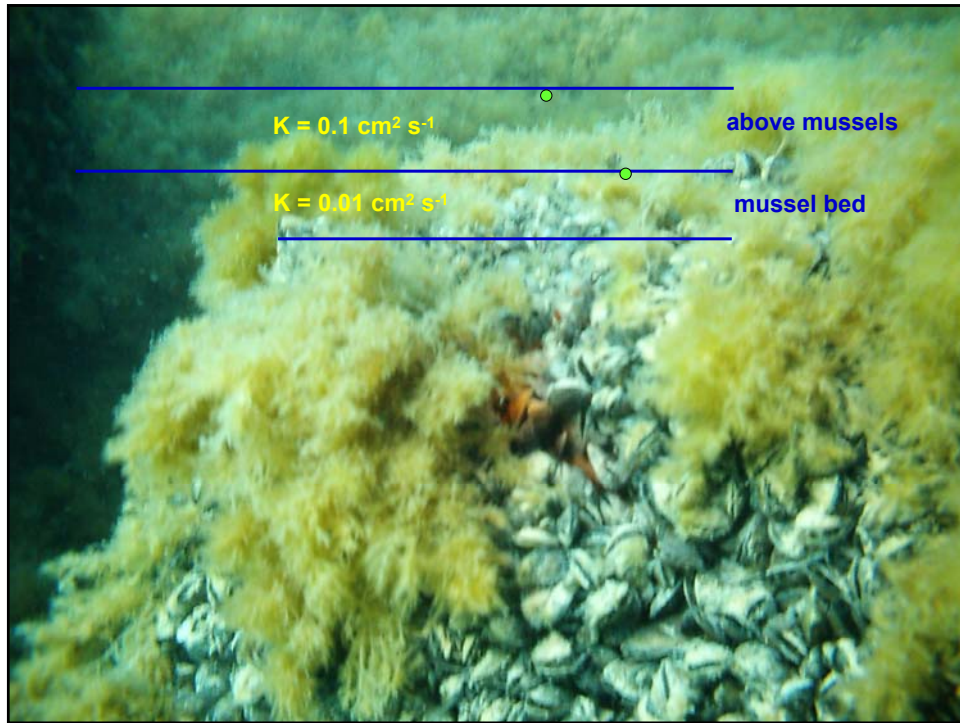


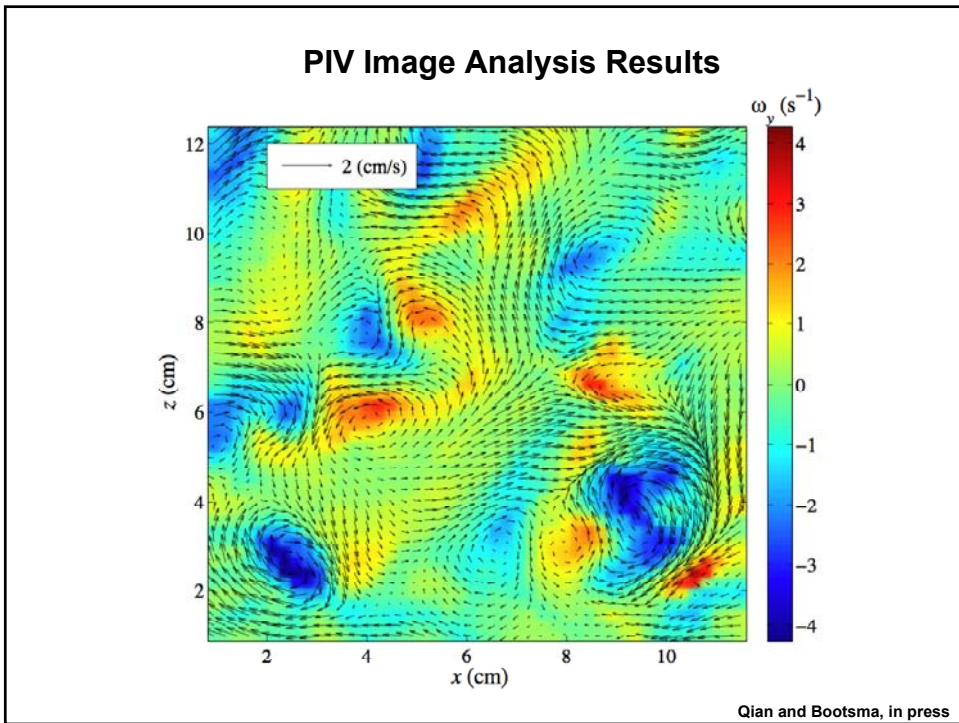
Benthic O₂ uptake by mussels

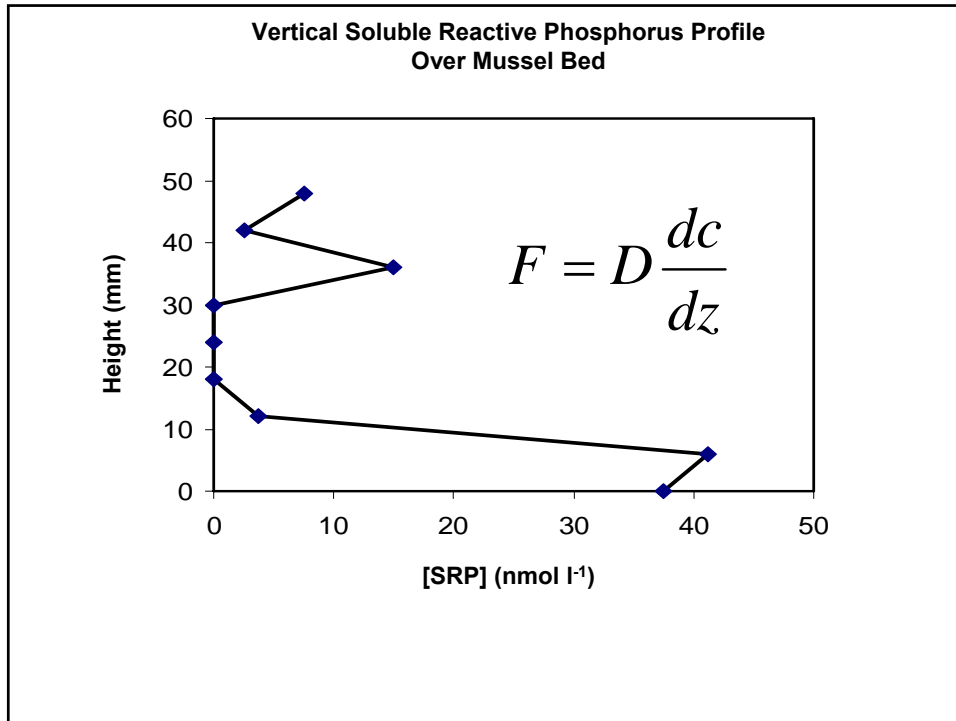


Effect of benthic respiration on thickness of anoxic layer









The *Cladophora* Solution

